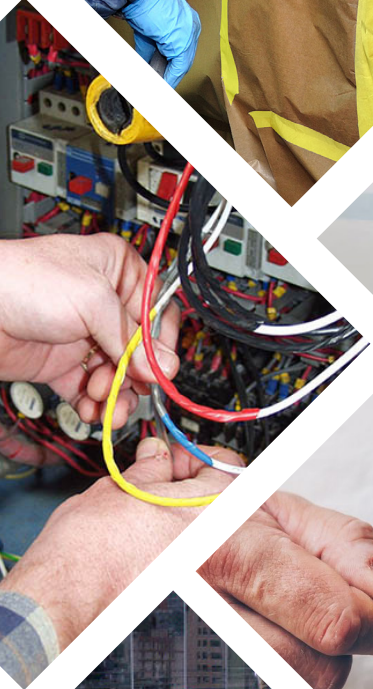




NIPPON
SELF ADHESIVE TAPES



WELCOME TO THE “WORLD OF TAPES”

#SolutionsOverTheRolls



ABOUT US

Founded in 1996 in New Delhi, with business excellence and innovation at the core of operations, today we are a reputed name in the self-adhesive tapes market. Nippon Industries is 100% Indian owned and an ISO certified company. We are a leading manufacturer, exporter and supplier of more than 200 types of reliable, effective and high-performance adhesive tapes, designed to meet all the manual and automatic application needs of a wide range of industries. All our products conform to international quality standards / set industry norms and manufactured using eco-friendly methods, top quality raw material and cutting-edge machinery powered by the latest technology. In our 20+ years in the adhesive tape business, we have earned recognition for our expertise, our wide range of high-quality products and reputation for excellent customer service by helping customers to identify and provide the solutions that are best suited to meet their requirements. Our varying products are used in different industries like automotive, electronics, leather, paper and news print industries, white good industries, printing and labelling industries, construction industries, packaging industries, etc. for solving their problems or fulfilling their needs. Our main motive is to provide complete customer satisfaction and gain long term business relationships by providing high quality products with best competitive



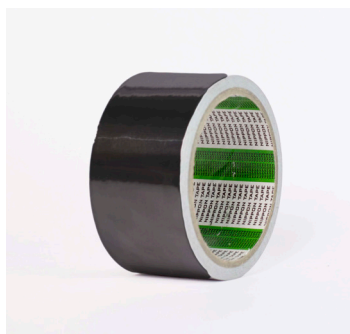
PANKAJ ARORA
(Director)





1. ANTI SKID TAPE

Anti Skid Tapes are widely used to avoid the slipping down on smooth and glazing surfaces like wet prone areas, stairs, bathrooms flooring, dark places; etc. It can be used on different surfaces like steps, wooden floors, ladders, showers, hazard warning areas; etc. It is suitable for all kinds of surfaces like granite, marbles, ceramic tiles, wood, glass; etc. It is UV and Chemical resistant. We can provide a personnel for application of our tapes to your home or office. It is available in different colors and features like glow in dark, anti-slip, etc.



2. ALUMINIUM FOIL TAPE

Aluminium tapes are specialised tapes where modified acrylic adhesive is coated on aluminium foil tape with a siliconized paper liner. Aluminium tapes are best suited for insulation, holding of evaporator coil wires, ducts, sealing, exhaust leaks and other professional applications. They are conformable, conductors and heat resistant. It is available in different thicknesses and widths.



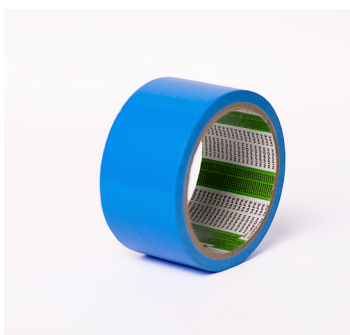
3. ACRYLIC FOAM TAPE

Acrylic foam tape is a strong double sided adhesive tape used mostly in automobile industries for making emblems, side moulding, bonding metals, plastics and all uniform and regular surfaces. It is recommended to bond many similar or dissimilar substrates. It is used as an alternative to screws, rivets and nails. It has strong holding power and commonly called high bond tapes, for more long lasting fixing, a special primer is advised to be applied with the tape. It is available in different colors.



4. BLUE HOLDING TAPE

Blue holding tapes come with rubber adhesive with strong holding power. It is used to hold on to different accessories like panels, drags plastic parts, grills, glass plates & a variety of components, in white goods appliances at the time of transit or delivery. It is suitable for masking applications also.



5. CARPET PROTECTION TAPE

Carpet protection tape is formulated with advanced adhesive solutions applied to a LLDE film to protect the substrates from all types of damage. Usually, it is used to protect the floors and hard surface areas like tile surface, decorative laminates and hardwood during the time of maintenance and painting. It can work on different textures like smooth, glossy, matte and embossed.

6. DOUBLE SIDED POLYESTER TAPE



Double side polyester tapes is a polyester sheet coated on both sides with a solvent acrylic adhesive for rapid and durable bonding. It contains a flexible carrier which makes it easy to apply on curves, rough surfaces and other comparable things. It has wide uses and used in different industries like electronics, printing, packaging and signages. It is highly suitable for mounting of decorative profiles, abs plastic parts in automotive industry, rubber and EPDM profiles.

7. DUCT TAPE



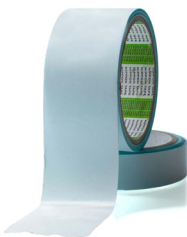
Duct tape is a combination of polyethylene film and cloth scrim backed with rubber adhesive, popularly known as Gaffers tape. Its a multi purpose, no residue with heavy duty fabric reinforced adhesive ensures long lasting hold. It is used in patching, reinforcing, bundling, sealing, splicing, ducting, packaging and high temperature applications.

8. DOUBLE SIDED COTTON TAPE



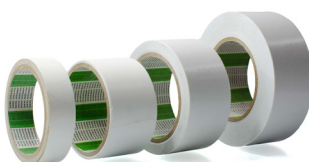
Cotton cloth tape are coated with hot melt adhesive on both sides which gives a strong adhesion, easy rip and clean removal capabilities. It has a polyester or paper release liner fused to it. It is popularly called plate mounting tape as its widely used in mounting of rubber stereotypes in flexo graphic printing. It is also suitable for joining two dissimilar surfaces such as signages boards.

9. DOUBLE SIDE REPULPABLE TAPE



It is a light blue coloured tape with tissue paper carrier, coated on both sides with synthetic resins, water soluble adhesives. It is suitable for high speed flying splices application on offline coating plants. It is used in splicing in finished mill splice, web offset splices, butt splices and double butt splices. It is recommended for newspaper and paper processing industries for splicing applications on medium and heavy weight papers. It is also suggested for paper grade manufactured by neutral papermaking process.

10. DOUBLE SIDE HOTMELT TISSUE TAPE



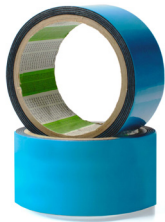
It is a special double sided tissue tape which consists of non-woven tissue and is coated with hotmelt adhesive on both sides. It is also used in attaching light things used in posters fixing. It is ecofriendly and has good shear strength. It is solvent and UV resistant.

11. EVA FOAM TAPE



The hotmelt adhesive on dual sided ETHYL VINYL ACETATE(EVA) foam tape provides strong adhesion, high shear strength and extended ageing properties. It is used to to fix external and internal car accessories, moulding, wheel hub covers, brake lights; etc , also utilised for mounting and bonding as well as referigeration and die-cutting.

12. PE FOAM TAPE



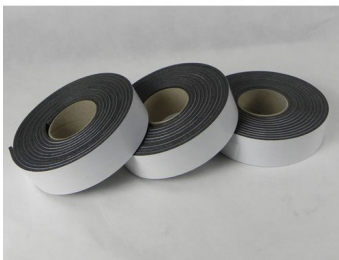
Double sided foam tape is a POLYETHYLENE foam coated with modified acrylic adhesive on both the sides, protected with paper or pvc liner which comes in different colors as release liner. As a description, PE foam with IUPAC name of polyethylene foam is a firm and closed cell foam with cell linkage. Hence, it is hard to return into its original shape after compressed by force. It is widely applied on sign, purchase display, book rack; etc. It is also used as a glue replacemnet material for envelope sealing, woodworkingetc It is popularly used in weight balancing as well.

13. NITRILE FOAM TAPES



NBR Sealing Tape has a moderately strong adhesive and is carried on white siliconized release paper. The Nitrile Foam Tape with thick insulation is a flexible, one-sided, lightweight, nitrile foam that has excellent flexibility and is suitable for thermal insulation and duct Gasket purposes.

14. S/S EVA FOAM TAPE



EVA foam tape is a soft and protective adhesive tape that can be used in conjunction with or instead of trail or endurance gaiters for added or tailored protection.It is ecofriendly, lightweight and easy to handle.

15. MASKING TAPE



Masking tape is made up of easy to tear crepe paper as a carrier material which is single coated with a rubber adhesive of excellent tackiness. It has general purposes as well as for industrial purposes. It is used for sealing of joints between windows and doorframes, masking auto body parts during auto painting, surface protection tapes from scratchesand stains, electroplating, bandoleering; etc. They are also employed to temporarily attach inspection stickers, name plate, instruction and work order during manufacturing and assembly operations. Also, can be used for packing and light bundling operations.



16. FINE LINE MASKING TAPE

Fine line masking tape is made of PVC polymer film tape which is specially used in Automotive industry for masking in automotive bumper and for straight line decorative masking applications. It can be used for masking the curved as well as straight line surfaces as the backing is designed for uniform stretching to mask off the areas properly. It can be used successfully with most solvent or water based paint systems. The tape is designed to reduce paint seepage to the minimum.



17. FLOOR MARKING TAPE

Floor marking tapes exhibits excellent adhesion, tack and good cohesion strength. It is mainly used for safety purpose, marking of hazardous area, lane marking or identification of specification area and storage segment. It is mandatory to use for companies registered under ISO- 9001. It is better than paints and can be changed when required.



18. MONO FILAMENT TAPE

Mono filament is a bi-directional filament tape based on a polypropylene film laminated to glass filaments. It mostly used for bundling and strapping of heavy goods, securing pallets and reinforcing of shipping cartons, which are exposed to shocks during transport, closing of metal coils, paint anchor test, reinforcing and closing of cables, structuring of umbilical cord for marine probe; etc.



19. HDPE TAPE

HDPE tape has been specially designed for joining and sealing of bags with HDPE base. It is made from HDPE Fabric providing properties such as High tensile strength, high binding capacity, strong adhesion, water and moisture proofing, which help to keeping joint well sealed. Its uses include for heavy carton sealing, Re - In forcing, splicing, bundling, laminating, strapping FIBC industry product, FIBC bag jointing.



20. CROSS FILAMENT TAPE

A strong and long lasting cross-weave filament packing tapes which has specially designed for applications requiring a high breaking strength. Usually rubber adhesive is coated over the film, but on request residue free adhesive can be used. It adheres to wide variety of surfaces like glass, wood, plastic, metal; etc. Also Woven glass fibers reinforces the backing, making this product extremely strong when used for heavy packaging where it can replace metal and polypropylene strapping to great advantage. Also used for holding of white goods, sealing of metal coils and packing of heavy weight cartons. It is used in steel mill, printing block and heavy duty packaging and engineer industries.

21. EYELET TAPE



Eyelet heading tape with plastic clips on the rear to help create uniform curves. Suitable for medium to lightweight fabrics. Can be used with poles up to 28mm diameter. Eyelet spacing approx. 13cm to centre or eyelet hole. Eyelet rings are sold separately. It is used in shoe industry for re-forcement application and other various applications.

22. NYLON TAPE



Nylon tape has a high temperature nylon backing and is single coated with a rubber adhesive. Nylon tape is used for flash removal on composite and metal parts as well as masking and holding tools, forms and parts. It is to be kept away from direct sunlight. It mainly used in shoe making industries for reinforcement shoe uppers and leather.

23. S/S REPULPABLE TAPE



It consists of a special repulpable micro-crepe paper coated with a colourless water-soluble pressure sensitive acrylic adhesive. It is engineered for core starting and reel closing in paper mills and printing plants (medium weight micro-creped paper). It is also Suitable on papers used for the food packaging industry.

24. BUTYL TAPE



Rubber mastic tape is a self-bonding tape, which consists of Ethylene Propylene rubber (EPR) backing, bonded to a tacky, temperature stable, electrical grade mastic. It is used for primary electrical insulation for cable and wire connections and vibration padding for motor leads, also suitable for direct underground use, can be wrapped, stretched or moulded around irregular shapes for insulation build-up. It is also used in electrical industry.

25. SPACER TAPE



Spacer tape is quality foam coated with exclusive acrylic adhesive to ensure excellent lasting results. It replaces the the uses of clips, used for fixing of aluminium doors, windows, steel, aluminium surface and panel fixing. It is also suitable for thermal insulation and thus seals against water, vapor and noise.



26. REFLECTIVE TAPE

Reflective tapes can highlight the objects as you navigate a narrow parking lot or a curved driveway. It can also protect your mailbox from being hit by the unaware drivers or bicyclists, especially if it is close to the road or partially or completely hidden. They are very practical, informative and cheap in terms of their benefits.



27. SILICON SEALANTS

It is commonly used to seal windows to frames, as they provide a water resistant seal which maintains strong hold against all weather conditions. Therefore, it is sometimes also used for automobile appliances and sealing cables and sensors in electronic devices. It can also be used for fixing glass into aluminum frames in lieu of rubber beading.



28. NANO TAPE (MAGIC TAPE)

A nano tape is a double sided, transparent traceless tape that can be used for different kinds of purposes such as mounting, securing or even organising. It is washable and reusable without losing its adhering properties. It is totally perfectly for any occasion from your house to your office.



29. GLASS CLOTH ADHESIVE TAPE

Glass cloth tape is made of woven fiberglass backing coated with silicone adhesive, making it flame retardant and great for thicker coat and high-temperature applications. Glass cloth tape is commonly used where resistance to heat and moisture require, coil winding in transformers and motors, and also used in resin reinforced product.



30. PINK RAYON TAPE

Strong close woven unbleached, uncoated rayon cloth coated with a Pink, aggressive, pressure-sensitive, solvent free rubber-resin adhesive. The tape is fully biodegradable, with a Neutral pH value and is unlikely to react with surfaces it is applied to. Strong, abrasion resistant and easy to apply. Its Applications are strapping of sports equipment handles, binding of nylon cords on military parachutes, sealing bandages and dressings on animals.



31. KAPTON TAPE

Kapton Polyimide film (PI film) provides high degree of resistance to chemicals and excellent outgasing properties in high vacuum environments. Usage section of the tapes are: wrapping electromagnetic wire and high temperature cable, H-class insulation in Motor, transformer, capacitor backing materials of pressure-sensitive adhesive tape, polyimide tube.



32. PVC

A pressure-sensitive PVC tape which is FR Grade designed for both hand and machine taping. There are two types of PVC Tape according to its usage, for instance: PVC Electrical Insulation tape & Automotive Wire Harness tape. The tape is extensively used in different areas such as electrics, wires, ducts wraps and ground warning etc.



33. PVC WIRE HARNESS GRADE

PVC Harness grade tape has been specially made for CABLE HARNESSING because of its quality of extreme softness and flexible nature with high confirmity. The tape is extensively used in different areas such as construction equipment, farm implements, permanent wrapping on wiring harness for trucks, cars, recreational vehicles and electronic assemblies.



34. S/S COTTON TAPE

Single side cloth tape made out of cotton cloth and is coated with strong natural rubber adhesive which gives it a good initial tack, highly reliable, economical, high shear resistant and good holding power with metal and rubber. It has polyester or paper release which makes the tape smooth and with easy release.



35. THERMAL CONDUCTIVITY TAPE

Thermally Conductive Adhesive Tapes combine mechanical attachment with improved thermal conductivity between joined surfaces. Utilizing these tapes reduces the thermal resistance between surfaces with a thin bond line of thermally conductive acrylic adhesive. They are commonly used to adhere LED light bars or semiconductor packages to heat sink surfaces.



36. SURFACE PROTECTION FILM

Surface protection tapes are generally used for preventing the scratches of the surface, or safeguarding it from dust particles and similar particles in the air. It also provides protection from damage, transportation and moisture.



37. TEFLON TAPE

Teflon Tape is a common, inexpensive and effective thin white tape used to seal pipe threads being joined together for plumbing jobs. Teflon tape used to seal water, air, gas from leaking through threaded connections that don't have a built in rubber seal.



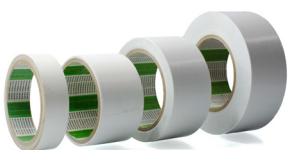
38. HEAT SEAMING TAPE

The tape is commonly used commercially in applications including pressurized water systems, central heating systems, and air compression equipment. Temperature Range: -268°C to +260°C (-450°F to +500°F). PTFE is completely stable up to +260°C (500°F). It is commonly called high temperature teflon tapes and used for electrical applications.



39. SIS POLYESTER TAPE

Polyester tapes consist of a single-sided, strong polyester backing material, coated with adhesive. It is appropriate for insulation applications requiring thin and durable materials with high dielectric strength. It is also used in core, layer and final insulation of coils and oil filled transformers. It is flame retardant and also chemical, moisture and solvent resistant. It is available in range of colours and thicknesses.



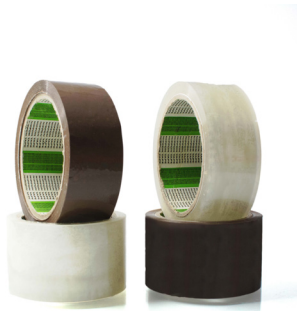
40. DOUBLE SIDED SOLVENT TISSUE TAPES

It is a special double sided tissue tape which consists of non-woven tissue and is coated with hotmelt adhesive on both sides. It is used for splicing papers, plastic films and corrugated boards, poster fixing, nameplate fastening, used in embroidery for securing the backing and fabric also bonds well to leather, woods; etc. It is also used in attaching light things and highly used in lamination industry.



41. STRETCH FILMS

It is extremely elastic plastic wraps that is stretched around various products for ensuring safety of products during shipping and transportation. It is often implemented in unitizing of products but can also be a coverage for packaging bundles of small objects. It is of two types: machine grade used for automatic application and manual grade. It also comes in different sizes and colours. Colours: red, blue, green, yellow, transparent, black, orange. Different colours are used to wrap different products for easy identification when wrapping.



42. BOPP TRANSPARENT AND BROWN

Biaxially oriented polypropylene film coated with water based strong adhesives which provides high tack and adhesion strength required for sealing of cartons to make them pilfer proof. It is ideal for light weight packaging, bundling and splicing. It comes in different thickness, widths and lengths as requirement by the customer.



43. PRINTED BOPP

Biaxially oriented polypropylene film coated with water based strong adhesives which provides high tack and adhesion strength required for sealing of cartons to make them pilfer proof. It is the best and cheapest tool for advertising as anything can be printed on it. Texts, logos, brand names anything could be printed on it in any color. It also comes in different thickness, width and lengths as required by the customer.



44. KRAFT PAPER TAPE

It is product that is made up of flat back paper coated with strong adhesives as packaging solution with strong adhesion strength, tear resistant: a next generation product. It is a right choice to seal light weight to medium weight cartons shipping cartons made out of corrugated sheets. It comes in plain brown color and also in printed variants.



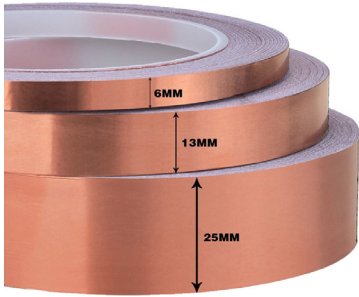
45. REINFORCEMENT PAPER TAPE

It is made up of flat back paper coated with strong adhesive and there is webbing on the tape for strong adhesion and differentiation. Popularly used in packaging of light weight goods.



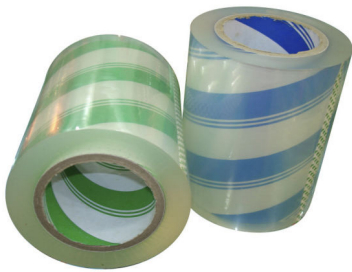
46. SECURITY PACKAGING TAPES (VOID TAPES)

Security tapes are innovative, premium quality void tapes that offer protection from pilferage and theft during storage and/or transit till the time it reaches the consignee any kind of tampering or unauthorized opening of consignment or packaging can easily be identified by the use of Nippon security tapes. It can be applied to a wide range of surfaces including metal, plastic, paper, glass and other materials. Customisable designs are also available to meet the customer requirements.



47. COPPER TAPE

Copper tape refers to a thin strip of copper, often backed with adhesive. Copper tape can be found at most hardware and gardening stores and also in electronic stores. It has good static dissipation, has good heat resistance and stability, even has electromagnetic shielding. It is not easy to fold and not easy to tear. It can be used to repair of burned or delaminated traces on printed circuit boards, or the creation of simple circuit patterns on unusual substrates for artistic substances.



48. LAMINATION TAPES

Laminating film is made of a base film, such as polyester or PVC, and is then coated with an adhesive. Adhesives can be activated either by thermal heat or by high-pressure. Common types of laminate are gloss, matt and silk. Lamination is often used for packaging, book covers, brochures, business cards and other printed items.



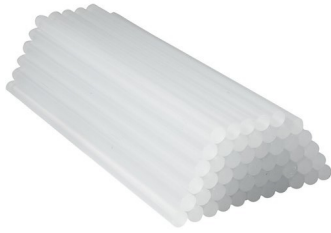
49. MASKER ROLLERS

Nippon Roller Masker is an effortless solution to mask/cover electronic appliances and large objects to protect them against any paint job or wood work activity. It is a high density, non-porous film that holds for longer time, leaving minimum residue. It is a multi-purpose masker tape with its application in painting, industrial, automotive & packaging Industry. Our product comes as a hassle-free and quick solution to save time and effort without compromising on quality and getting reliable protection every time.



50. ADHESIVE TRANSFER TAPE

Transfer tape consists of a thin adhesive film without a carrier. The tape can be transferred to most dry surfaces from a peel-away release liner. Transfer tape and double coated tapes often use a release liner to enable or improve handling and dispensing of the tape product. It is used for mounting, splicing and for closing and sealing systems.



51. GLUE STICKS

We deal in different types of glue sticks with different compositions, it can be acrylic or hot melt depending on customer usage. They are used in different applications like in trimming and gasket installation in electrical appliances, for interior trimming and seating assembly in automobile industries, for cabinet and panel assembly in furniture industry, for encapsulation and wire tacking in electrical industries, for case closing, carton and bad sealing, wrapping and pallet stabilization in packaging industry; etc.



52. WATER ACTIVATED REINFORCEMENT TAPES

Water Activated Tape (WAT) is a paper-based tape with an adhesive that is dry to the touch until activated by water. Water turns the dried adhesive into a tacky, fluidic adhesive that is designed to adhere to corrugated boxes. We can customise it in different lengths and widths. It also comes in plain or printed variants with warning sign.



53. COLOURED PACKAGING TAPES

We also have options of plain coloured packaging tapes with BOPP film as its base. It can add color to your packaging and hence makes it look attractive, different colors can also be used to separate different packages. It can be customised to any of your favourite color, length, thickness and width.



54. PRINTED SPF

Surface protection Tapes is generally used for preventing the scratches of the surface, or safeguarding it from dust particles and similar particles in the air. It also provides protection from damage, transportation and moisture. We also options of printed surface protection tape, as we always believe that a advertising can never go wrong so protect your products and increase your visibility.



55. HIGH TEMPERATURE MASKING TAPES

Masking tapes have various industrial usages. We specialise in providing high temperature masking tapes used in battery manufacturing, printing jobs, etc. These are available with different levels of heat resistance and can be supplied as suitable for customers. It is ecofriendly and very thin tape with high tack. It can customised with different lengths and widths.

**Eagerly waiting for you to Join US and
experience seamless customer service
with best quality products.**



NIPPON INDUSTRIES//SUPER SALES CORPORATION


WZ - 21 PLOT NO. 06,
MAIN ROHTAK ROAD,
BHAGWAN DAS NAGAR EXTN.
NEAR PUNJABI BAGH METRO STATION,
NEW DELHI 110026


FOLLOW US ON

 /nippon tapes

 @nippon tapes

 @nippon tapes

 981125559, 9311135559, 7303275559

 pankaj@nippon tapes.com, nippon tapes1988@gmail.com

© All Rights Reserved

